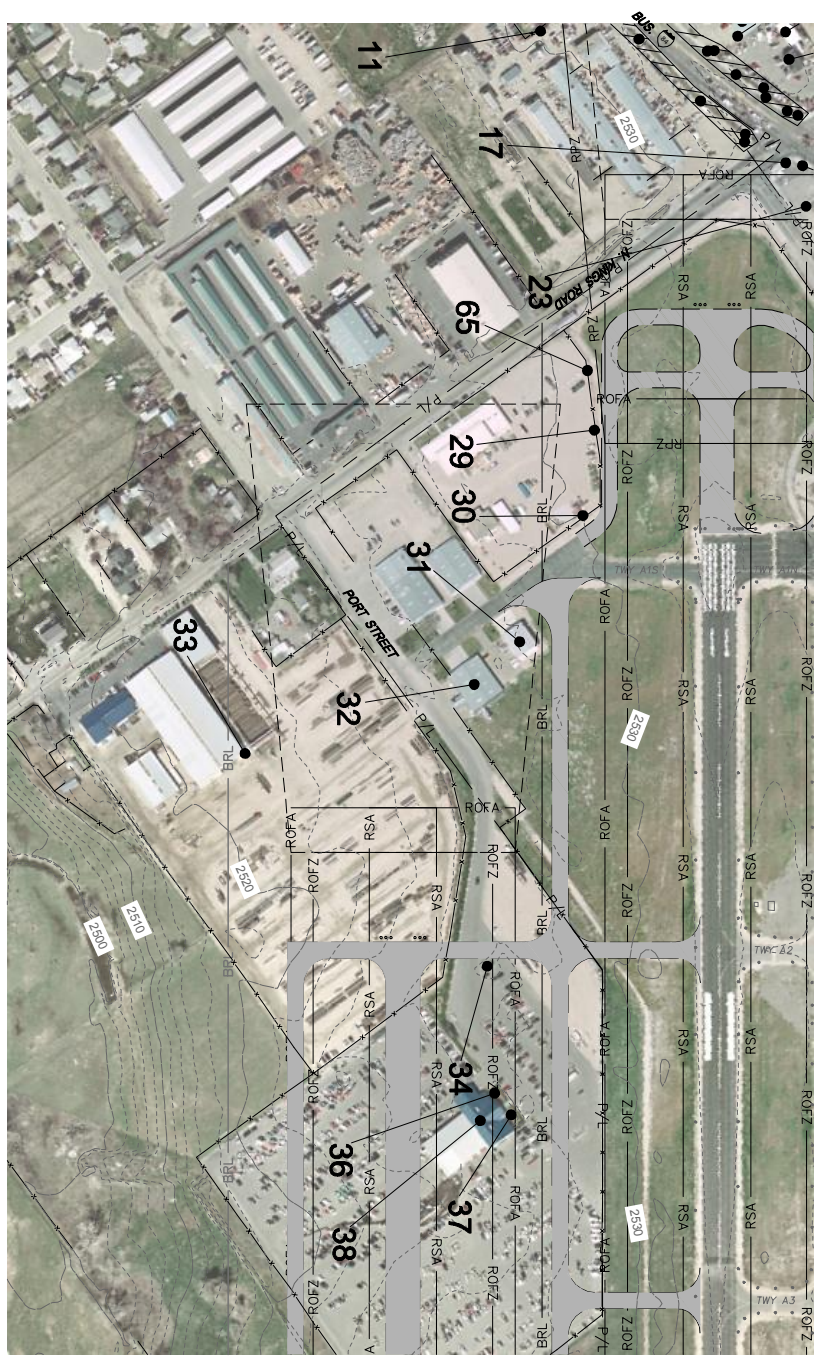


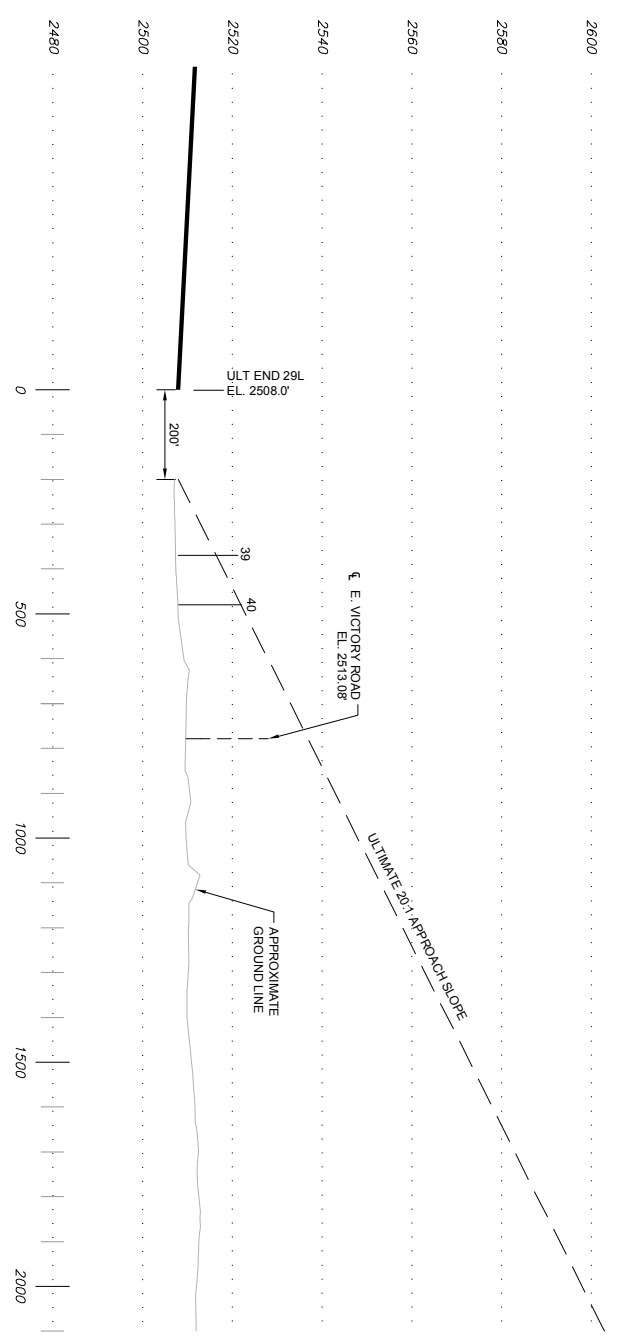
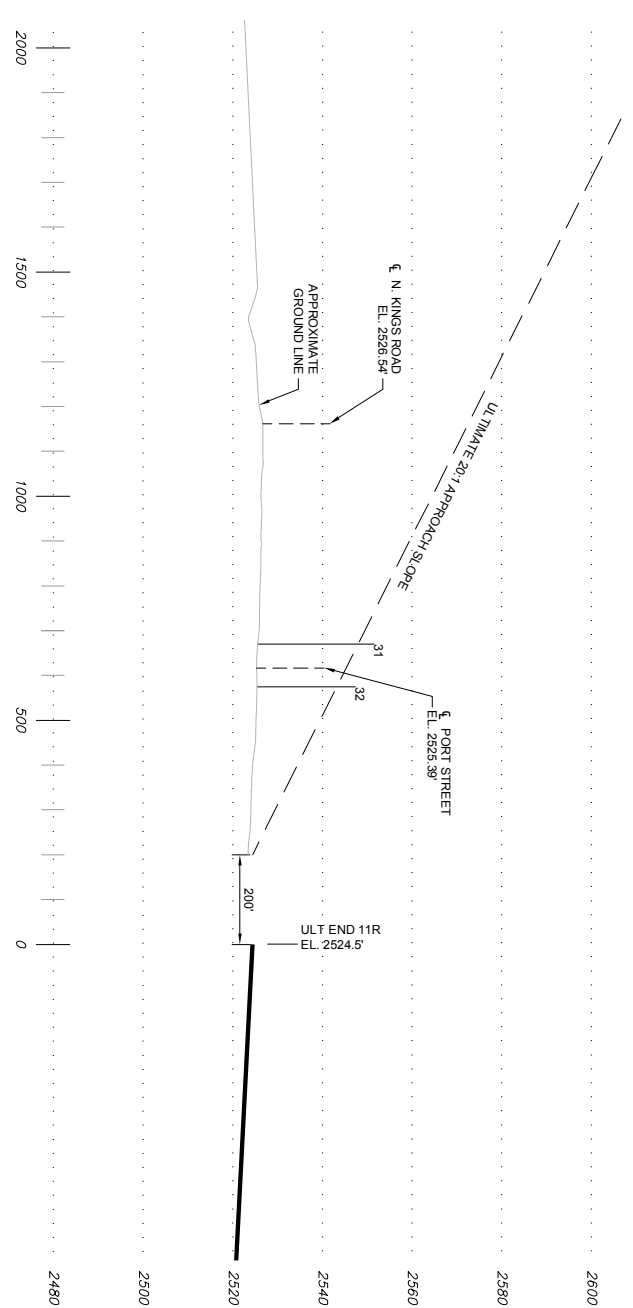
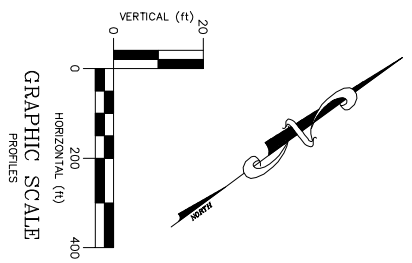
This document, together with the concepts and designs presented herein, as an instrument of service, is intended only for the specific purpose and client for which it was prepared. Reuse of and improper reliance on this document without written authorization and adaptation by Kimley-Horn and Associates, Inc. shall be without liability to Kimley-Horn and Associates, Inc.



ULTIMATE RWY 11R-29L
 Note: Objects penetrating the Transitional Surfaces are not included in Obstruction Tables and not shown in Profile for clarity.

APPROACH SURFACE OBSTRUCTIONS RUNWAY END 11				
No.	DESCRIPTION*	OBJECT ELEV.	PENETRATION**	DISPOSITION OF OBSTRUCTIONS
31	BLDG	251161	4	REMOVE/RELOCATE
32	BLDG	254743	4	REMOVE/RELOCATE

APPROACH SURFACE OBSTRUCTIONS RUNWAY END 11				
No.	DESCRIPTION*	OBJECT ELEV.	PENETRATION**	DISPOSITION OF OBSTRUCTIONS
39	TREE	251134	5	TRIM/REMOVE
40	TREE	252204	0	TRIM/REMOVE



Note: NGS obstruction data was collected in accordance with FAA Area Navigation Approach (AN-CPD) survey specifications. Vertical accuracy within 3' to 10' and horizontal accuracy within 20'.
 Source: DTM Survey performed by 3D West, GeoTerra Mapping Group and dated 11-18-08. Kimley Horn and Associates analysis, November 2009.

ULTIMATE RWY 11R-29L

PREPARED FOR NAMPA MUNICIPAL AIRPORT CITY OF NAMPA, IDAHO 116 MUNICIPAL DRIVE NAMPA, IDAHO 83687		INNER PORTION OF THE APPROACH - ULTIMATE RUNWAY 11-29	PREPARED BY Kimley-Horn and Associates, Inc. © 2010	SCALE 1" = 200'	6 5 4 3 2 1
				DRAWN BY KAG DESIGNED BY ADN CHECKED BY MDF	REVISIONS DATE BY
DATE 11/30/2010 PROJECT NO. 093504000 SHEET NUMBER 7 OF 9					